



**MAYFAIR**  
ELEMENTARY SCHOOL  
THE WORLD IN A NEIGHBORHOOD SCHOOL



[Español](#)

[汉语](#)

[SHQIP](#)

[Português](#)

[عربي](#)

## Mayfair Primary Education Center @ Austin Meehan Middle School

**\*\*IMPORTANT TRANSPORTATION UPDATE\*\***



### Dear Parents & Guardians:

As most of you are aware, Mayfair Elementary School will open a second campus location beginning in **August 2018** for our kindergarten and 1<sup>st</sup> grade students. Our Primary Learning Center will operate out of a renovated, dedicated space in the Austin Meehan Middle School campus. Our school day will begin at 8:25 AM and end at 3:04 PM at both locations.

**The Mayfair Primary Center is located under a mile from our main building at the following address:**

**Mayfair Primary Education Center  
@ Austin Meehan Middle School  
3001 Ryan Avenue  
Philadelphia PA 19152**

As we continue the planning process for this transition, we are committed to ensuring families and students have access to services that offer minimal disruption to their arrival/dismissal routine. Our goal is to work closely with you to establish safe and orderly arrival and dismissal to help our students begin and end their days in a calm manner. That begins with good communication and partnership with our families.

**Feedback throughout this process is crucial, and we need your help!**

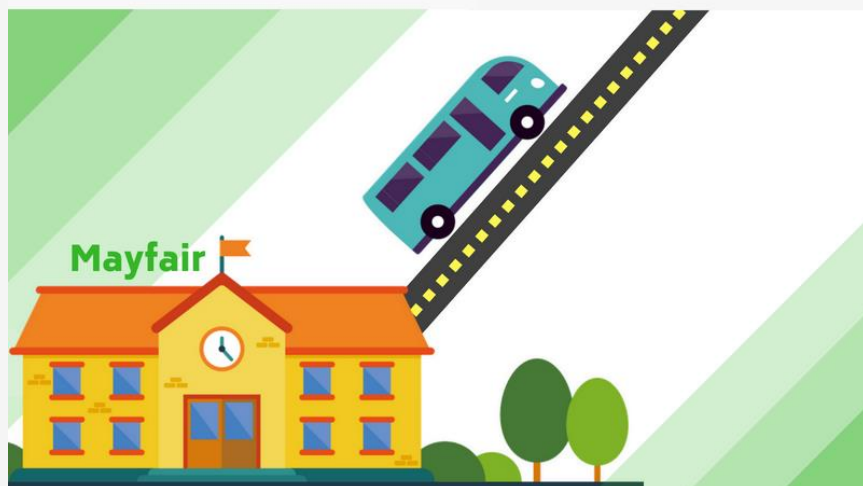


The information in this letter contains two options for your child's arrival and dismissal from school. Please take time to read each option and let us know your thoughts and preference.

**OPTION 1:**  
**Shuttle from Mayfair  
Main Campus to &  
from Primary Center  
@ Meehan**



**OPTION 1**  
**Campus-to-  
Campus  
Shuttle  
Service**



We are offering optional shuttle service for kindergarten and 1<sup>st</sup> grade students who would prefer to arrive at our main campus daily and ride a shuttle to the Mayfair Primary Education Center @ Meehan each day. The shuttle may be a convenient transportation option for families who have older siblings attending the Mayfair main campus. This option provides one central location for drop-off and pick-up for the entire family.

## OPTION 2:

**Drop off & Pick up  
DIRECTLY at  
Meehan Campus**



## OPTION 2

**Car Riders:  
Parent  
Drop-Off  
and Pick-  
Up**

Families who prefer to directly drop off and pick up their children at the Primary Center @ Meehan will have the option of providing their children with door-to-door service. If you choose to pick up and drop off at the Primary Center @ Meehan you will have an extended window of time at both locations if needed:

- **Morning drop-off:** 8:25 AM - 8:45 AM
- **Afternoon pick-up:** 2:45 PM - 3:04 PM

Please complete the transportation request form by clicking the button below, and submit the form no later than **Friday July 29<sup>th</sup>**. We will use this information to make adequate preparations for your child on the first day of school, **August 27<sup>th</sup>**.

**[TRANSPORTATION FORM](#)**

**We thank you for your support and feedback during this important transitional process.** Please continue to visit our website at [www.philasd.org/mayfair](http://www.philasd.org/mayfair) for the most current information regarding this transition.

G. Lowery  
Principal

---



**MAYFAIR**

**ELEMENTARY SCHOOL**

THE WORLD IN A NEIGHBORHOOD SCHOOL



THE SCHOOL DISTRICT OF  
PHILADELPHIA

See what's happening on our social sites!

